

**Head Office:**  
Dixon Kelley Estate Agents  
1 Penn Court  
Station Road, West Moors  
Dorset. BH22 0JJ

# DORSET PARK HOMES

**DRAFT**

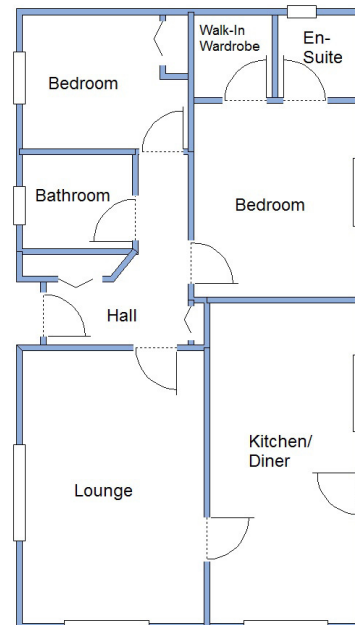
**Telephone: 01202 877511**

[www.dorsetparkhomes.com](http://www.dorsetparkhomes.com)

## ‘River View’, Stubbings Meadow, The Bridges, Ringwood. BH24 1EB



**Luxury New Home—Fully Furnished**



This drawing has been prepared for diagrammatic purpose only. Not to scale.

### 2-Bedroom Park Home - approx 36' x 20'

Accommodation & approximate room dimensions:

- Stately Albion Tredegar Elite 2021
- Entrance Hall: Cloaks & Broom cupboard
- Lounge: approx 15'7" x 10'5". Feature fireplace & bay window.
- Kitchen/Diner: approx 18'4" x 8'4". Range of floor & wall cupboards. Built-in high level oven and hob. Integrated fridge/freezer, dishwasher & washing machine. Cupboard housing combination gas boiler (untested). Bay window & door to garden
- Bedroom 1: approx 11'1" x 9'3" Plus 'walk-in' wardrobe.
- En-Suite Shower Room
- Bedroom 2: approx 9'3" x 7'8". Fitted wardrobe.
- Bathroom: White 3 piece suite
- Gas Central Heating (system untested)
- PVCu Double-Glazing
- Delightful Patio Garden with Raised Deck & Shed.
- Parking on Plot. Garden Shed
- Age Restriction 50+ No pets.
- Small Residential Park in unique location, walking distance of Ringwood Town Centre.

### Walking Distance of Ringwood Town Centre



**Additional photographs at [www.dorsetparkhomes.com](http://www.dorsetparkhomes.com)**

**Price Guide: £250,000**

**Pitch Fee approx £200 per cal month**

**VIEWING STRICTLY BY APPOINTMENT WITH THE VENDOR'S AGENT Dorset Park Homes 01202 877511**

**IMPORTANT NOTE:** These particulars are believed to be correct but their accuracy is not guaranteed. They do not form part of any contract. Nothing in these particulars shall be deemed to be a statement that the property is in good structural condition or otherwise, nor that any of the services, appliances, equipment or facilities are in good working order or have been tested. Purchasers should satisfy themselves on such matters prior to purchase. Ref.W04352

*The recommended specialist in Park Home sales*

Proprietor: Simon Dixon

